

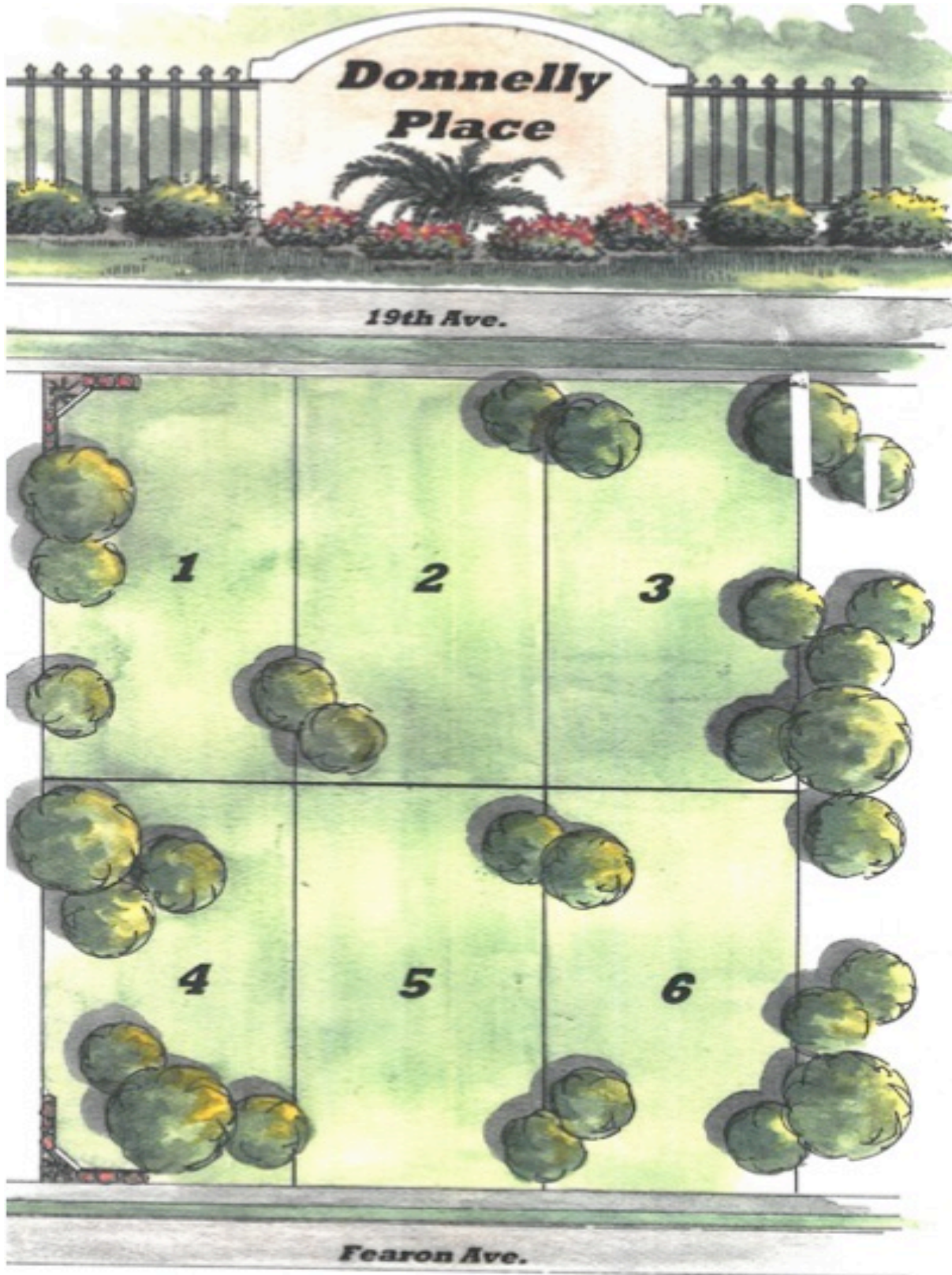
DONNELLY PLACE

Mount Dora Florida



Funding Request \$3.150 Million
12 Months Pre-Paid Interest
Exclusive Luxury Homes
3,000-4,500sqft
\$600,000-\$700,000 Sales Price
A+ school district
Permit ready

SITE OVERVIEW



WHY LAKE COUNTY?

Lake added 49,000 people between 2010 and 2017, swelling from a total of 297,052 people in 2010 to 346,017 in 2017. The county's 16.6 percent growth rate far surpassed Florida's overall rate of just over 11 percent.

The population of residents aged 65 and older grew by 20,000 people, from 71,825 to 91,769, while kids under the age of 18 grew by just 5,300 (61,741 to 67,047) in the last seven years. That inched the median age in Lake County from 45.6 years old in 2010 to 47 years old in 2017.



THE MILAN



THE SEVILLE



Square Footage

A/C LIVING 1	2528 sq. feet
A/C LIVING 2	702 sq. feet
A/C LIVING TOTAL	3228 sq. feet
DRNCE	600 sq. feet
ENTRY	67 sq. feet
UNITS	240 sq. feet
TOTAL	4137 sq. feet

EXTERIOR DIMENSIONS:
40'-0" x 43'-0"



THE ASPEN





LEADING FLORIDA DEVELOPERS